

HELSTOMM GROUP

Design · Manufacture · Build · Management



A photograph of a construction site. In the foreground, a worker in a blue jacket and yellow hard hat stands with their back to the camera, looking towards a large, rectangular concrete panel being lifted by a crane. The panel is suspended by a chain and is being moved into place. Another worker in a red jacket and yellow hard hat is visible in the background, working on the structure. The sky is clear and blue. The overall scene depicts a large-scale construction project.

HELSTOMM
GROUP

“Vision is the blueprint
that turns construction
into reality”

We, HELSTOMM GROUP, are a building materials company, that provides comprehensive Design-to-build services.

With over 15 years of experience in construction, real estate development, and design management, we have successfully completed numerous projects.

We're collaborative partners in realizing our clients vision and fostering sustainable collaboration.

Working with architects, construction firms, and developers, we offer intelligent, meticulously engineered precast elements.

Our Design-to-build service empowers our partners to construct exquisite residences, offices, universities, shopping centers, and infrastructure that serve and enhance local communities.

We invite you to explore our capabilities and join us in creating a better-built future.

“We, HELSTOMM GROUP,
believe that every project starts with a vision,
and our goal is to be the partner
that turns that vision into reality.”

Our HELSTOMM GROUP strengths –
powerhouse in the construction industry



Our Experience

With over 15 years of experience in construction, real estate development, and design management, our extensive expertise encompasses concrete manufacturing, the construction industry, and a diverse range of Design-to-build services tailored to meet the unique needs of each project.

With a proficient team that includes specialists in concrete manufacture, construction, design, and project management, we ensure that every aspect of our partner is handled with utmost professionalism and expertise.

We are prepared to deliver reliable projects from start to finish, and our knowledge and skills allow us to do so efficiently.



Our Experience

Design Management

- Parameters Assessment of Land Plots and Sites
- Coordination of Detailed Plans and Approvals
- Optimal Use and Development of Land Plots
- BIM Modelling for Streamlined Project Processes

Construction Management

- Project Planning, Coordination, and Supervision
- Contractor and Subcontractor Selection
- Quality Control and Technical Construction Regulations Compliance
- Timely and Efficient Project Execution

Manufacture of Precast Concrete Products

- Efficient Management of Production Processes
- Wide range of prefabricated concrete products such as floors, structures and walls production

Construction Projects

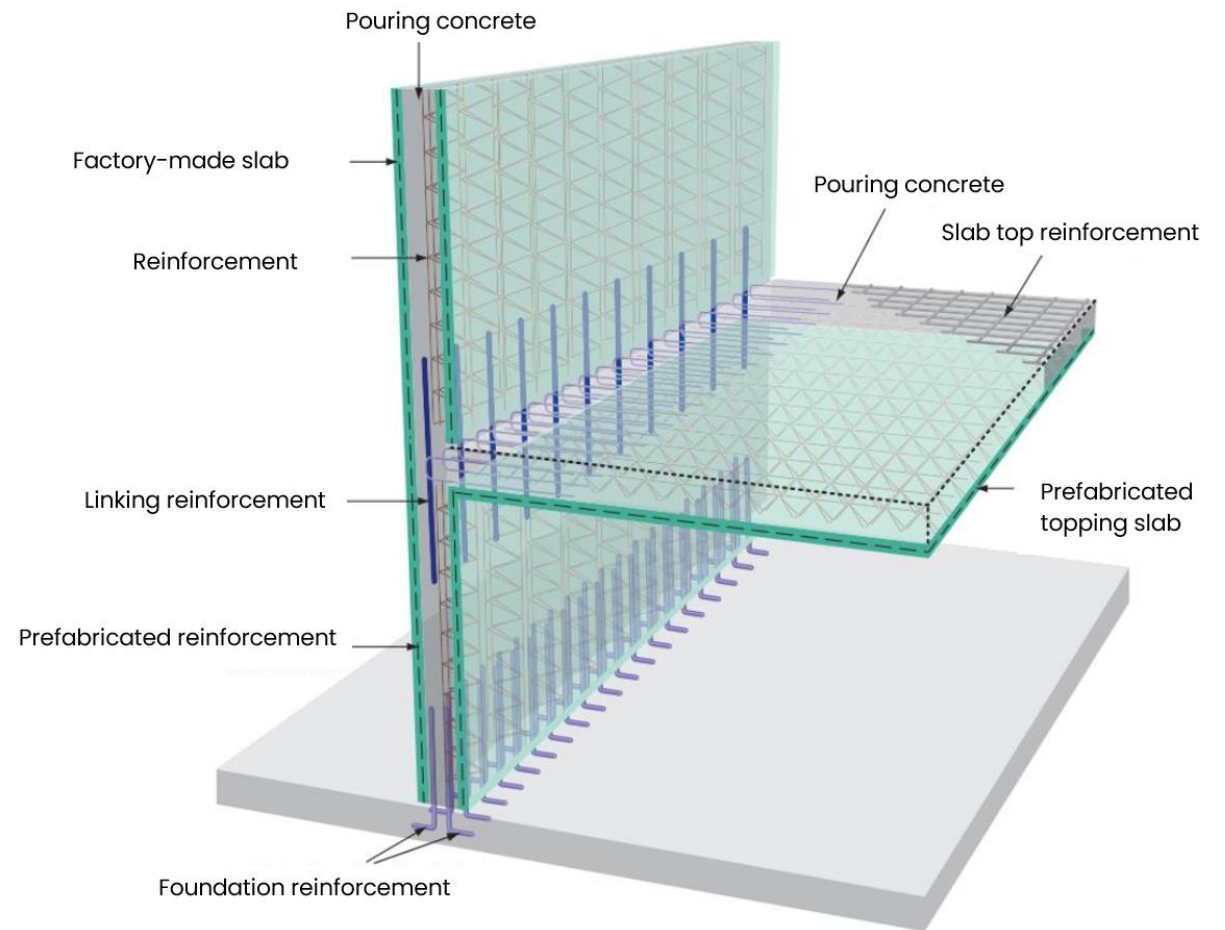
- Full-Service Solutions from Design to Completion
- Handling all Stages, Ensuring Smooth Project Execution

Relevant Solutions for the Market: Construction System

We manufacture the wide range of prefabricated concrete products such as floors, structures and walls production

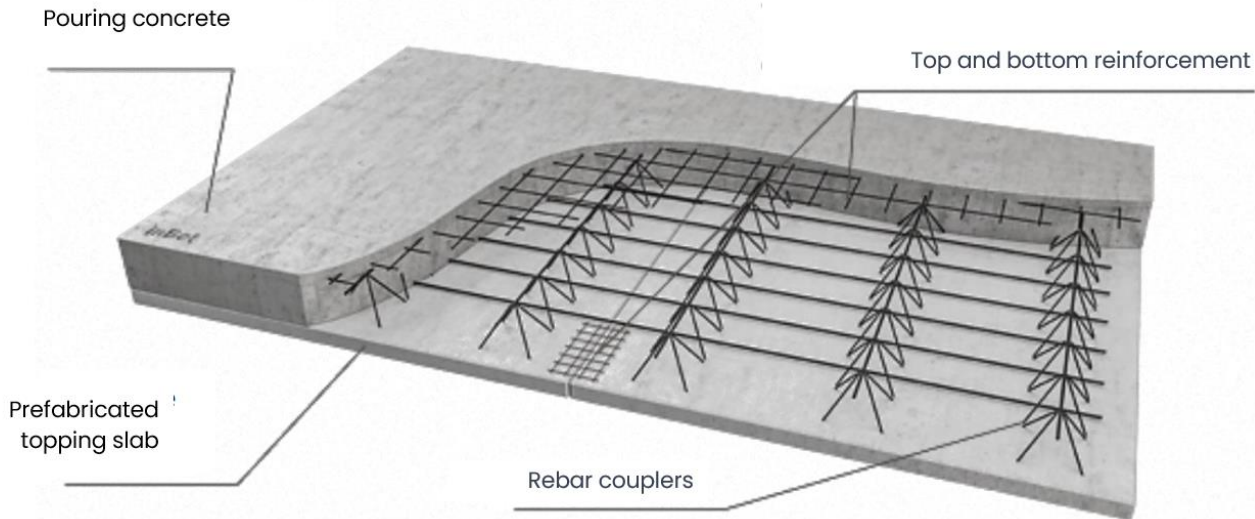
Combined solutions of prefabricated (factory-made) and cast-in-place reinforced concrete constructions:

- Lattice girder slab
- Double wall
- Beams
- Balcony



Relevant Solutions for the Market: Construction System

Filigrann Slab



Main advantages of precast monolithic slabs

Efficiency

- Precast monolithic slabs are quickly and efficiently assembled because they are made of premanufactured elements. This allows for reduced construction time and increased project efficiency.

High Quality

- Elements manufactured in the factory meet high-quality standards, as they can be produced under controlled conditions. This ensures that the slabs will be strong and meet design requirements.

Convenience

- Precast monolithic slabs can be adapted to various project requirements and forms, providing more design flexibility and opportunities to create unique designs.

Strength and Durability

- Precast monolithic slabs, due to their solid composition and high quality, often exhibit better resistance to deformation and greater durability, ensuring stable building performance over a long period.

Energy Saving

- The use of premanufactured elements in the factory can reduce energy consumption, as fewer resources are required compared to traditional on-site concrete pouring

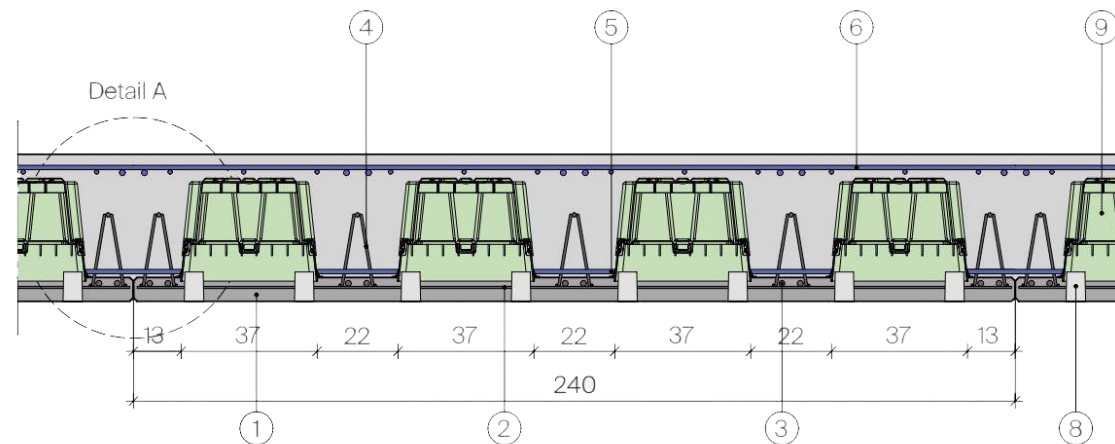
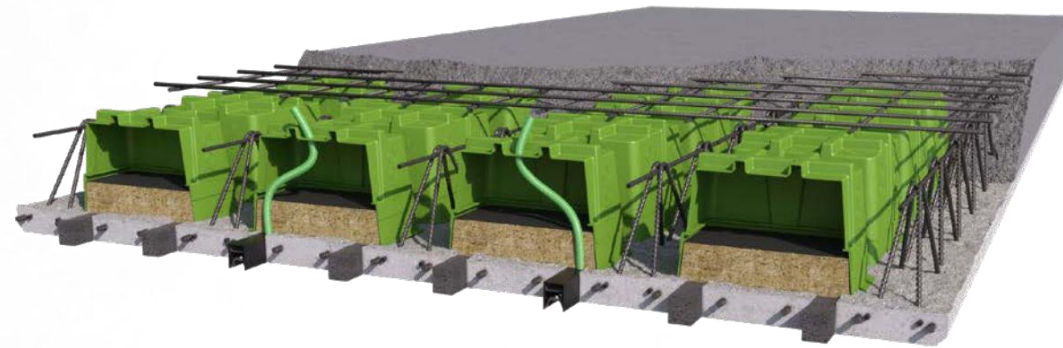
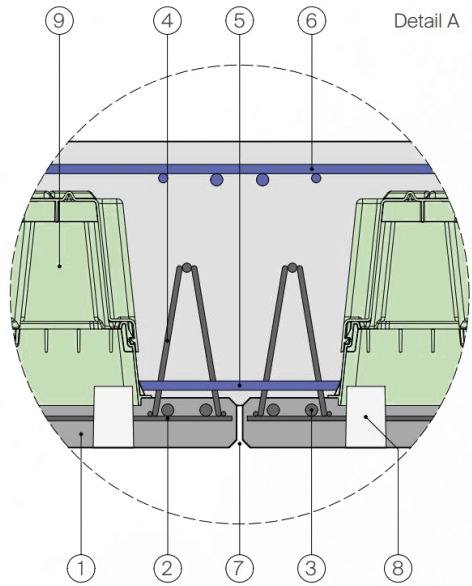
Advantages of precast monolithic slabs

- ✔ No need for floor leveling screed in administrative buildings. This saves floor height and installation costs.
- ✔ No beams.
- ✔ 70% of utilities are installed in the slabs before casting, significantly increasing construction speed.
- ✔ Complex structural solutions are possible.
- ✔ Final surface finish of walls and ceilings is not required (no need for plastering).
- ✔ Low transportation and installation costs.
- ✔ Walls can be delivered with insulation already installed.
- ✔ Construction time is 3 times shorter compared to monolithic slabs.
- ✔ Electrical installation is included.



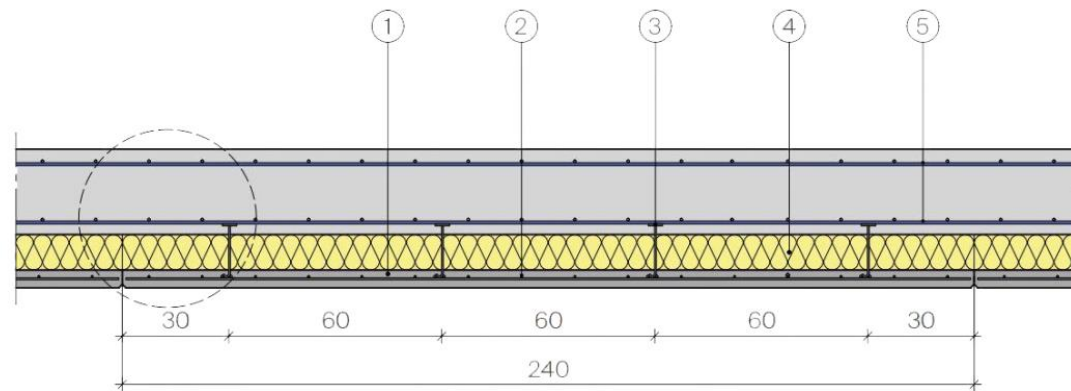
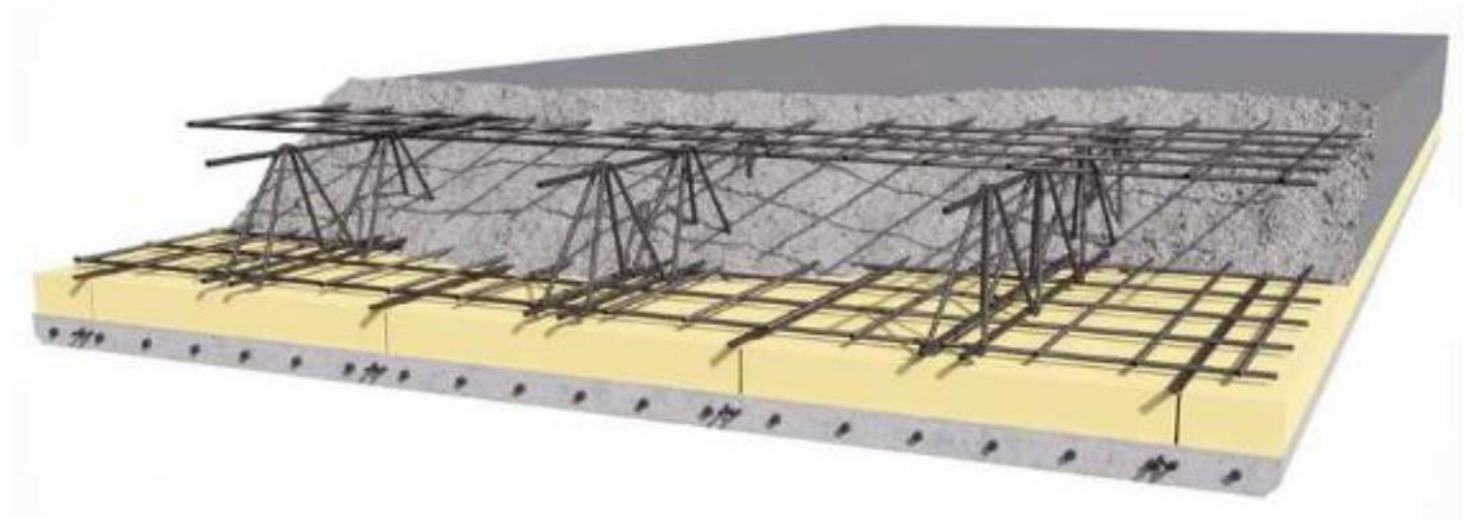
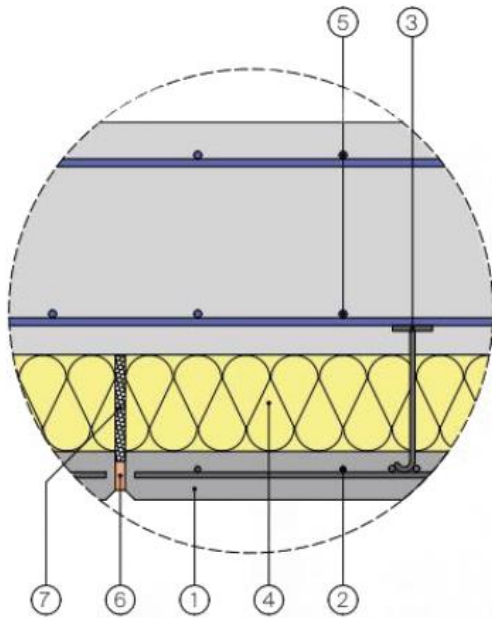
Relevant Solutions for the Market: Construction System

Acoustic slabs



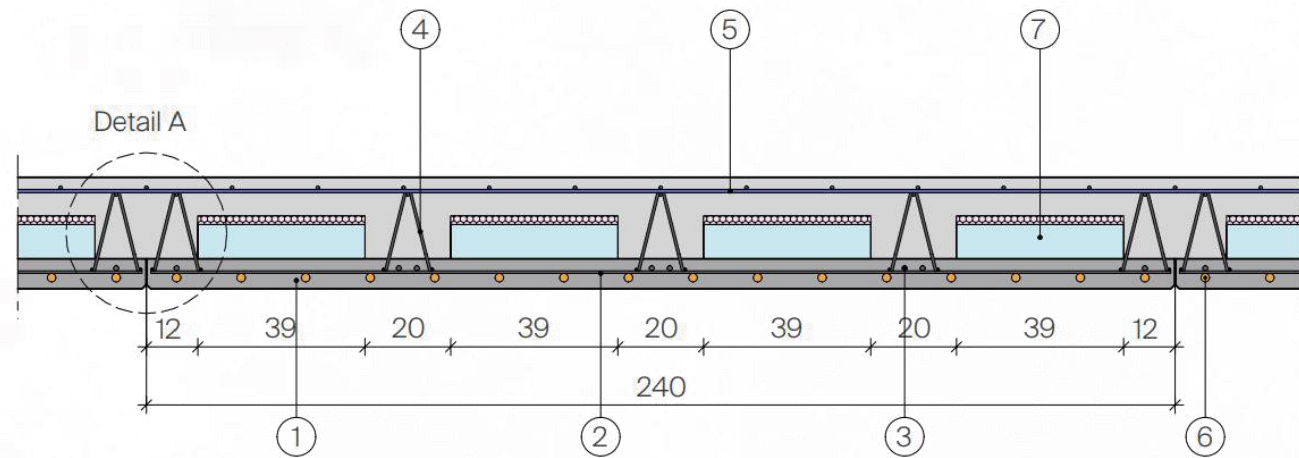
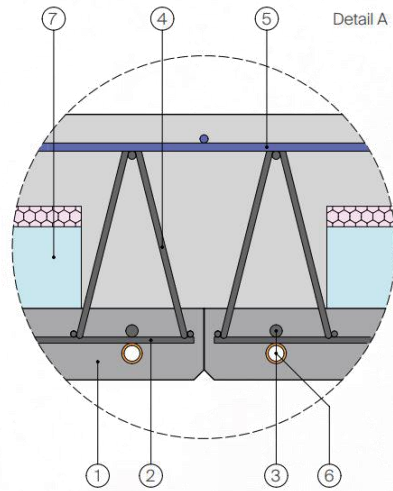
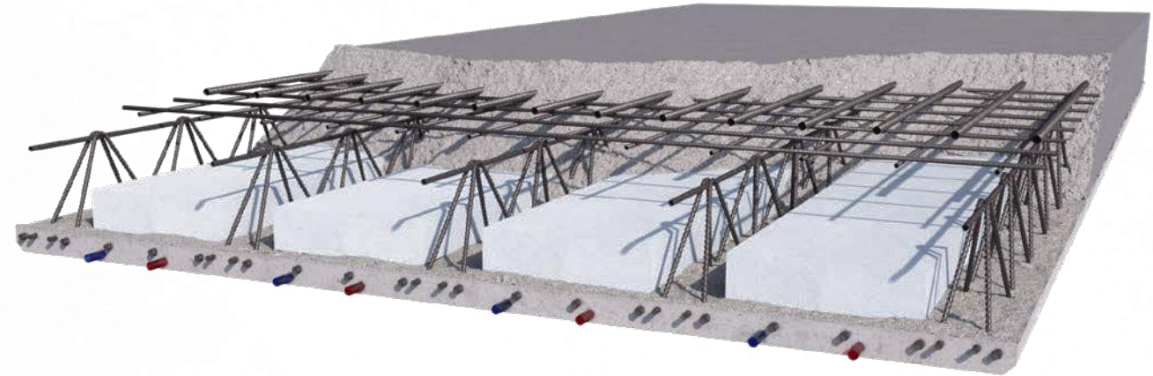
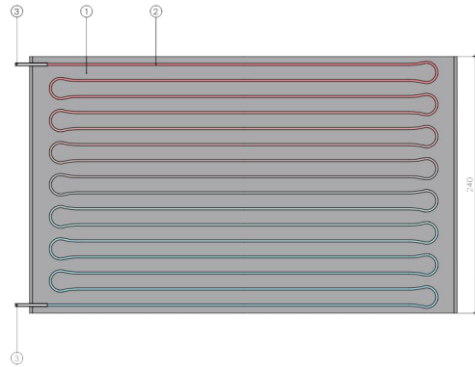
Relevant Solutions for the Market: Construction System

With thermal insulation slab



Relevant Solutions for the Market: Construction System

Heated/cooled slabs



The advantages of walls

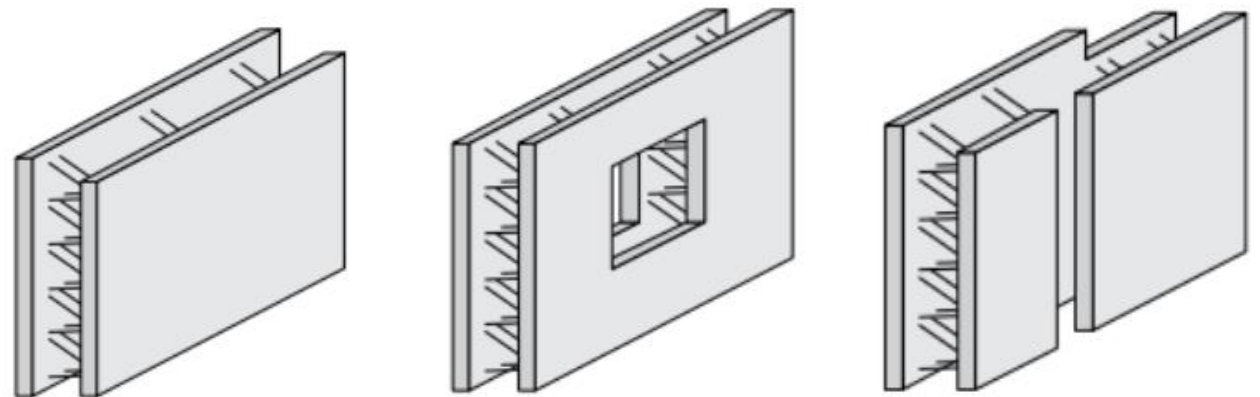
Integration of engineering systems

- Engineering systems are installed together with ventilation, plumbing, water supply, and electrical installation.



Walls are composite reinforced concrete walls consisting of two precast reinforced concrete layers connected girders reinforcement system.

This type of wall follows the design principles of conventional monolithic reinforced concrete walls.



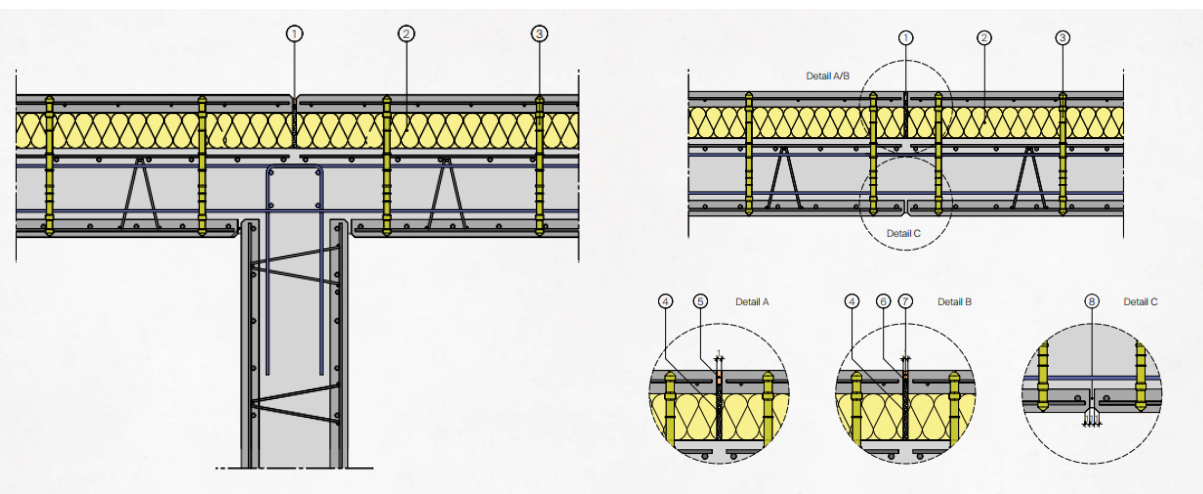
Relevant Solutions for the Market: Construction System

Walls



Relevant Solutions for the Market: Construction System

Insulated double wall



Relevant Solutions for the Market: Construction System

1. Fiber cement board
2. Roller shutter opening
3. Rosette
4. Rosette
5. Electrical conduit outlet
6. Electrical conduit outlet
7. Wooden battens
8. Window frame
9. Rectangular opening
10. Vertical opening for engineering systems
11. Vertical opening for engineering systems
12. Embedded box
13. Circular opening
14. Circular opening
15. Lintel
16. Integrated masonry wall
17. Anchor bracket
18. Fixing screw
19. Stilt joint
20. Floor batten

Production elements in production



The advantages of walls

Lower installation costs compared to other constructions

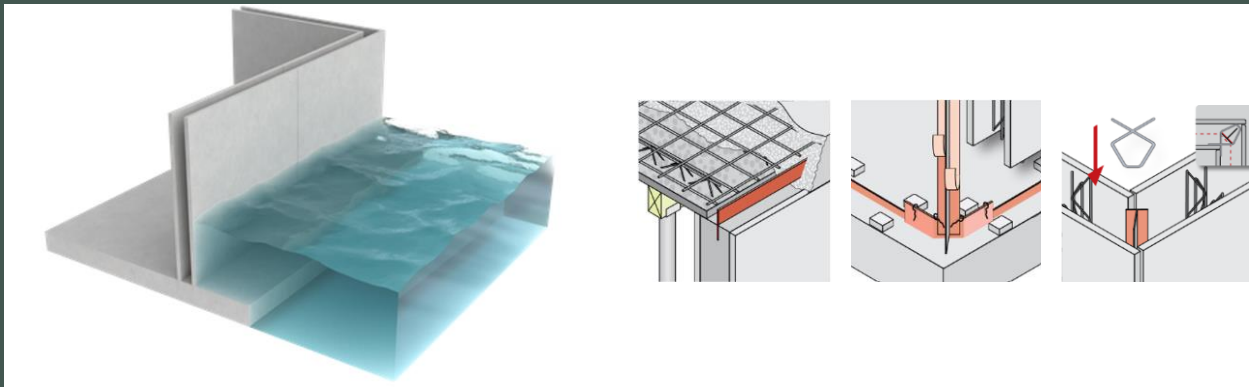
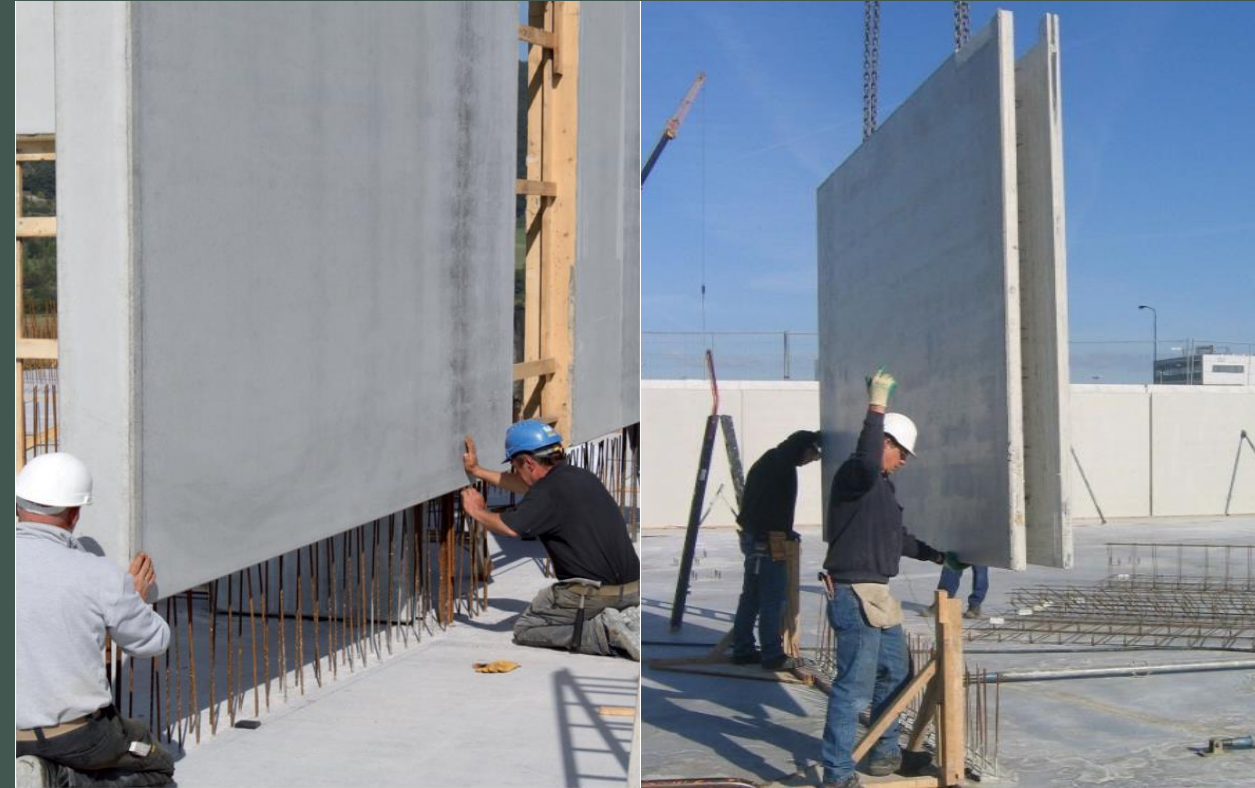
- Reduce construction time.
- Reduce labor resources

Quality

- The walls can have window and door openings and can be adapted for sanitary or electrical installations.
- With two ideal surfaces.
- Possibility of giving any texture to the external wall, obtaining a high visual effect without the need for a costly on-site facade.

Waterproofing

- The walls fully withstand any water pressure and retain moisture.
- Application - swimming pools, retaining outdoor walls, reservoirs



The advantages of walls

High walls available

- The height of the wall is even up to 9m!



Practical application in infrastructure facilities

- Due to the small weight of the elements, their size is only limited by the dimensions of the transport vehicle, allowing for the delivery of very large-sized products. It enables a wide range of applications in infrastructure projects



Relevant Solutions for the Market:
Construction System

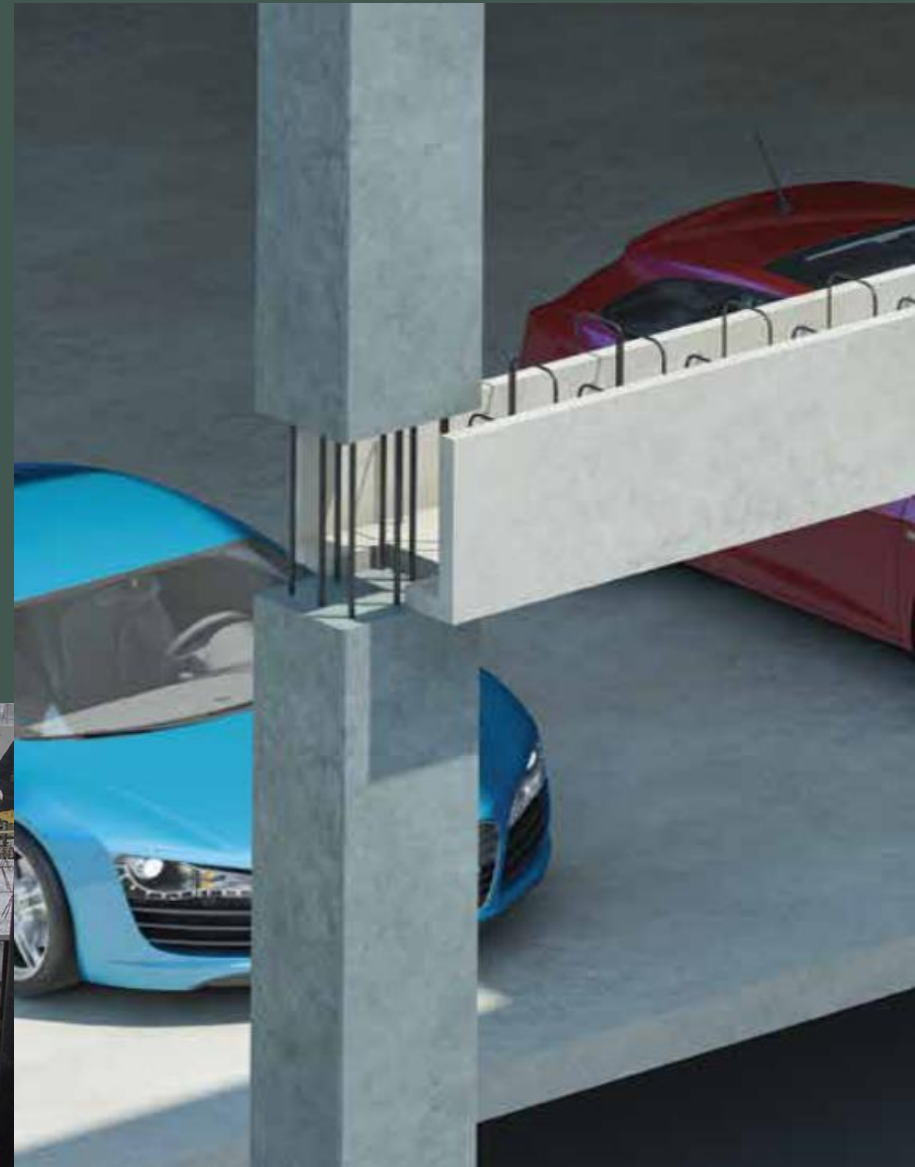
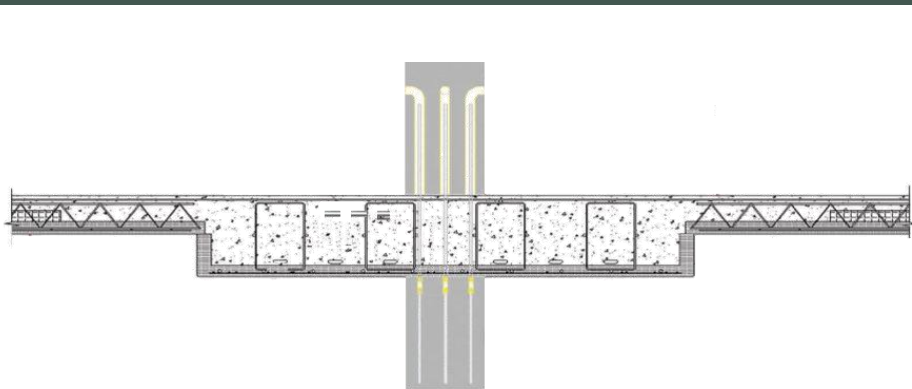
Balconies

Balconies without thermal bridges



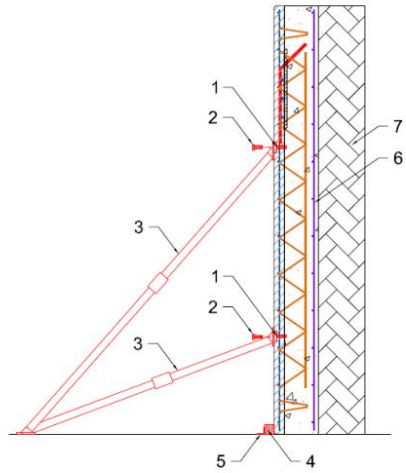
Composite beam formwork is designed to connect columns and slabs into a unified monolithic element.

They can be combined with post-tensioning reinforcement. The length of the beams can reach up to 10 – 14 meters.



Relevant Solutions for the Market: Construction System

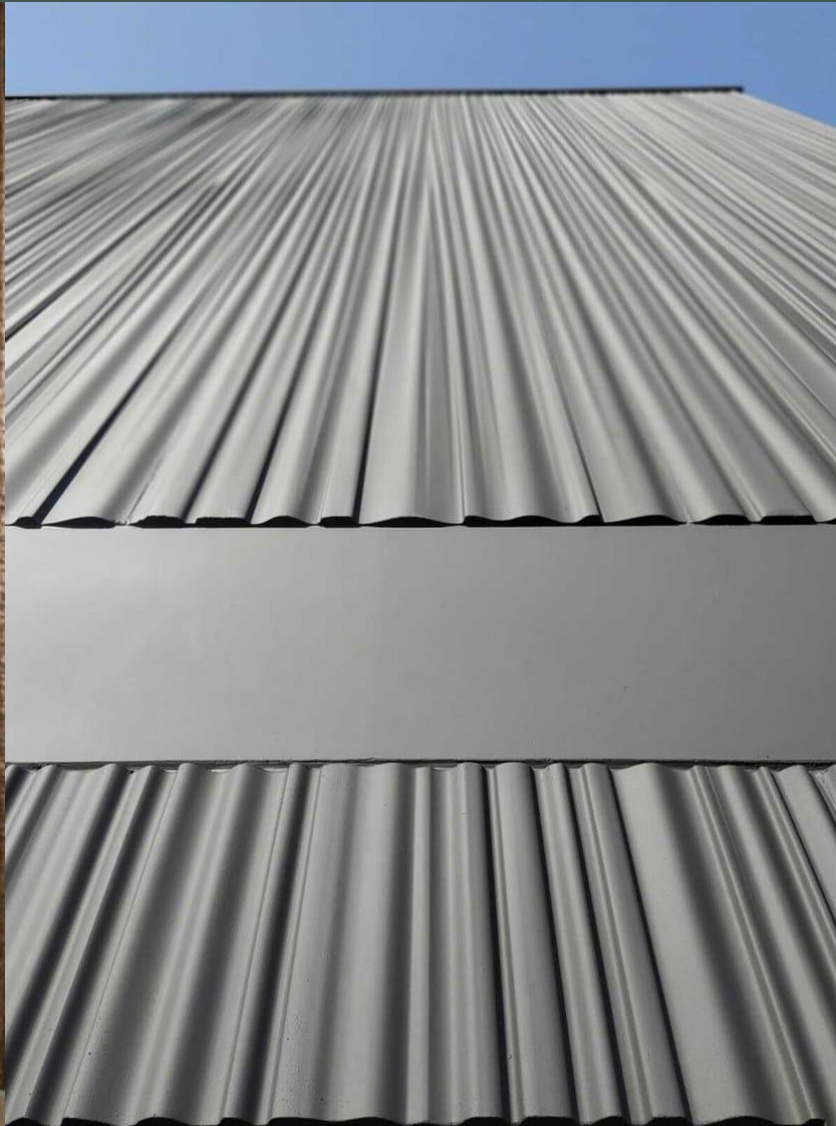
Prefabricated concrete structures walls with push-pull props



1. Anchoring anchor
2. D16 anchoring bolt
3. Push-pull prop
4. Push-pull prop head
5. Fixing bracket
6. Reinforcement mesh
7. Buttress wall

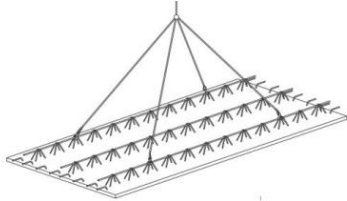







Examples





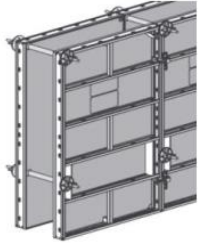






Comparison

Slab

	Composite filigree floor slab (250 mm)	In-Situ concrete slab (250 mm)	Composite filigree floor slab vs In-Situ concrete
Construction			<ul style="list-style-type: none">• Composite filigree floor slab can save up to 10% - 15% of project costs vs In-Situ concrete slab
Time costs			If the prefabricated concrete products factory were to be built near the real estate construction area, Composite filigree floor slab can save up to 15% - 20% of project costs
Transportation			vs In-Situ concrete slab

Comparison

Wall

	Combined filigree wall (250 mm)	Solid wall (250 mm)	In-Situ concrete wall (250 mm)	Combined filigree wall vs Solid wall and In-Situ concrete wall
Construction	 <p>50 100 50 (mm)</p>			<ul style="list-style-type: none"> Combined filigree wall can save up to 15% - 20% of project costs vs Solid wall or In-Situ concrete Wall
Time costs				<p>If the prefabricated concrete products factory were to be built near the real estate construction area,</p> <p>Composite filigree floor slab can save up to 20% - 25% of project costs</p>
Transportation				<p>vs Solid wall and In-Situ concrete wall</p>

HELSTOMM GROUP

Andrius Guzaitis

Chief Executive Officer

+370 650 79303

andrius@helstomm.lt

Mindaugas Dagys

Chief Technical Officer

+370 686 15499

mindaugas@helstomm.lt